

HISTORIC



GUILDFORD



Settled in 1829 and classified as an historic town by the National Trust of Australia.

INCLUDING HERITAGE WALK TRAIL MAP

WELCOME TO GUILDFORD

With its blend of old and new, Guildford today is a unique contemporary destination which oozes character and village charm.

The entire town of Guildford is classified by the National Trust - one of only two towns in Metropolitan Perth to earn such a classification.

Guildford Highlights

- Learn about the fascinating history by setting out on one of the 4 self-guided heritage walk trails featured in this brochure.
- Browse the James Street antique strip, which offers one of the largest ranges of second hand wares outside Perth.
- Enjoy some serious retail therapy at the quaint home décor outlets, specialty gift shops, galleries and clothing stores.
- Tour the Goal and Taylors Cottage at the Guildford Museum Precinct.
- Discover a real treasure at the Guildford Heritage Art Markets, held on the third Sunday of every month.
- Stop for lunch and a glass of Swan Valley wine at one of the charming, historic pubs.
- Soak up the village atmosphere and enjoy a relaxing Devonshire Tea at an old-fashioned tea room.
- Be spoilt for choice when it comes to dining out, tapas, Thai, Italian and the best burgers in Perth.
- Visit Guildford's courthouse (c. 1866) and interpretive displays that explain much about the region's past at the Swan Valley Visitor Centre.

Stay a little longer and get a greater feel for Guildford by staying overnight. In Guildford you can choose from bed and breakfast (B&B), self-contained and motel style accommodation or a beautifully restored hotel where you can experience a night in a luxury room steeped in historical character.

The history of Guildford and the Swan Valley

The traditional owners of this region are the Noongar people who have lived in the area for over 40,000 years. Sites of continuous human habitation at this scale have not been found anywhere else in the world. Noongar creation stories tell of the giant serpent or crocodile like creature, the Wagyl, creating the Swan River on its way. The Swan River is the Wagyl's home and it continues to reside there today.

It was the fertile soil of the Swan Valley that led to the first European settlement at Guildford soon after the Swan River Colony was established by Captain James Stirling in 1829.

Blocks of land on both sides of the river were quickly assigned to eager settlers. When Guildford was surveyed at the end of 1829, 94 blocks were made available to soldiers, agriculturalists, yeomen and servants released from their indentures.

Captain Stirling set aside 4,000 acres for his future "country retreat" which he had named "Woodbridge" during his exploratory journey up the river in 1827.

The Swan River quickly became the first highway through the region, and Guildford developed into a busy and important river port and trading centre until the 1880's.

Much of Guildford's original town plan, including the central church square, subdivisions and general land use, remains as it was leaving a largely intact early 19th century English market town.

A visit provides a rare glimpse into early colonial settlement with many fine, well-preserved civic, commercial and private buildings from the 1840s to the 1920s and 1930s.



GUILDFORD HERITAGE WALK TRAILS

Explore the history of our town — on foot!

Established on what is virtually an island encircled by the Swan and Helena Rivers, Guildford is ideally suited to exploration on foot.

To assist you in discovering the numerous fascinating historical buildings, lively characters and wonderful stories of this 'island village' four self-guided heritage walk trails with 50 interpretive panels have been built.

The trails start and finish at the Old Guildford Courthouse (Swan Valley Visitor Centre).

Each trail is distinguished by coloured marker plates located on "heritage green" coloured posts. The plates feature the original Town of Guildford crest.

The Guildford 'crest' carries the anchor (symbolising its inland port role), a sheaf of wheat (agriculture) and a bunch of grapes (viticulture).

This brochure includes maps that show the trail routes and locations of the 50 interpretive panels.



THE CAPTAIN STIRLING WALK

A longer walk, featuring the gorgeous old buildings and mature plane trees of Guildford Grammar School.

This trail meanders past the beautifully restored Rose and Crown Hotel c.1841, which still offers the same friendly hospitality of yesteryear and Padbury's Store c. 1869. It passes a number of historic cottages, locations and streetscapes, and provides an expansive view out over the flood plain to what was Captain James Stirling's beloved Woodbridge Estate on the Swan River.

A feature of the trail is the picturesque grounds, and London Plane tree streetscape, of Guildford Grammar School, founded by Charles Harper in 1896.

This prestigious boys' school provides an Australian interpretation of the traditional English Public School education system and many of its students have become prominent State and Australian citizens.

Located within the school grounds is the imposing Chapel of St Mary and St George, consecrated in 1914, and today one of the finest examples of Gothic architecture in Australia.



THE CAPTAIN STIRLING WALK

- C1.** Guildford Courthouse
 - C2.** Rose & Crown Hotel
 - C3.** Padbury's Store
 - C4.** Padbury's Cottage
 - C5.** 93 Terrace Road
 - C6.** The Guildford "Toc H" Cottages
 - C7.** Woodbridge House
 - C8.** Guildford Grammar School
 - C9.** Chapel of St Mary & St George
 - C10.** Old Guildford Cemetery
 - C11.** The Station Master's Cottages
 - C12.** Flemish Bond Cottages
 - C13.** The Old Agricultural Showgrounds
 - C14.** The Worker's Cottages
 - C15.** The Independent Chapel
-
- C1** Trail Interpretive Panel
 - C8** The Captain Stirling Walk 2250 metres, 60 - 75 min
 - C10** Perth - Midland Railway
 - C11** Train Station
-
- Public Toilets
 - Barbecue Area
 - Picnic Site
 - War Memorial



THE TOWN WALK

This trail passes through the historic Meadow Street precinct and returns via the Guildford town centre.

The Town Walk commences at the Guildford Heritage Precinct, one of the sites where, in 1829, Surveyor H.C. Sutherland set aside substantial land facing Stirling Square for civic and government buildings.

In 1841, the first government buildings were constructed in the precinct consisting of two prison cells, a constable's room and a set of stocks. In 1866, convict work crews extended the gaol, built the Courthouse and an exercise yard for the prisoners.

The trail then heads south across the railway line to Helena Street, passing numerous historic buildings along the way including the art-deco style Guildford Town Hall c.1937.

It then traces a roughly circular route past Western Australia's oldest continually operating primary school returning via the commercial precinct on James Street, where you can pause for a coffee or to browse the antique shops.



SWAN VALLEY VISITOR CENTRE
OPEN 7 DAYS
9379 9400

To Swan Valley Food and Wine Trail



THE TOWN WALK

- T1.** Guildford Courthouse
- T2.** Colonial Gaol
- T3.** Taylor's Cottage
- T4.** Mechanics' Institute
- T5.** Guildford Post Office
- T6.** Wesley Chapel & Manse
- T7.** Guildford Town Hall
- T8.** Stirling Arms
- T9.** Commissariat Store
- T10.** Du Cane's House
- T11.** Kings Meadow
- T12.** Town Bore
- T13.** Guildford Primary School
- T14.** The Two Rivers
- T15.** The Railway
- T16.** Vaudeville Theatre
- T17.** Guildford Hotel
- T18.** Brockman's House
- T19.** Alfred's Kitchen

- T1** Trail Interpretive Panel
- - -** The Town Walk
1800 metres, 40 - 60 min
- - -** Perth - Midland Railway
- Train Station

- Public Toilets
- Barbecue Area
- Picnic Site
- War Memorial



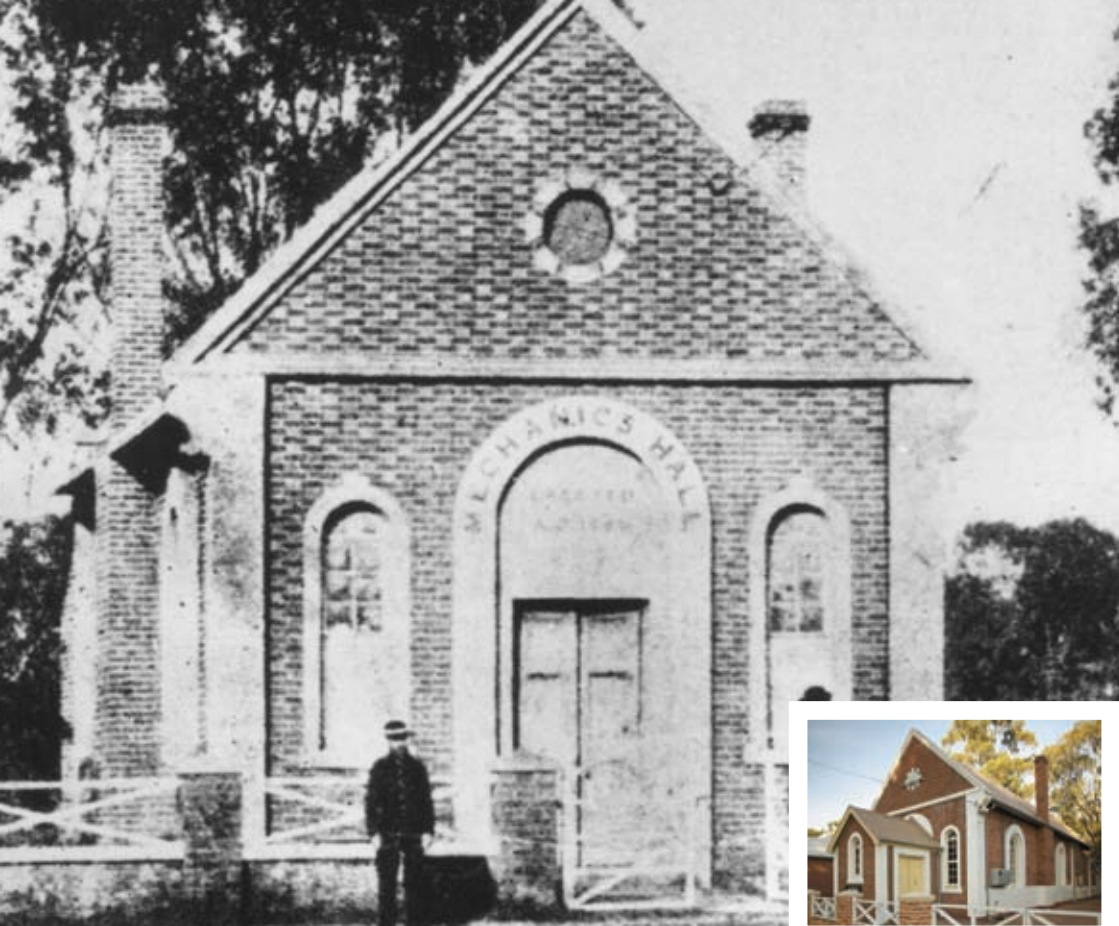
THE RIVER RAMBLE

This trail passes the historic Rose and Crown Hotel c.1841 and Padbury's Store c.1869, located in the Terrace Road business precinct.

Walter Padbury is an important figure in the town's history. He was Guildford's first mayor (in 1887) and one of early Western Australia's most successful entrepreneurs - at one time, the biggest landowner in the Colony!

Also en-route, Barker and Gull's Warehouse is an example of the numerous retail and wholesale businesses that existed in Guildford during the height of the town's importance as a port

and market town to the Swan River Colony. The trail also takes in Moulton's Landing on the banks of the Swan River where you can learn about the tragic Abraham Moulton and the river's role in early Guildford before returning via a series of heritage homes to picturesque Stirling Square and the Swan Valley Visitor Centre.



THE STIRLING SQUARE CIRCUIT

A shorter walk for those with less time, this trail incorporates the best of the historic Meadow St precinct including the Guildford Goal c.1841, the Courthouse c.1866 and Taylor's Cottage.

It passes the Mechanics' Institute, established in 1865, to provide education for the working men of the town. The building has always had a strong connection with Guildford community life. Today, as in the past, the institute continues to be utilised for entertainment and educational activities.

The trail then loops out into the lovely tree-lined parkland of Stirling Square. Here, there are many interpretive panels that provide visitors with a good insight into the core of old Guildford town.

Typical of English town planning during the colony period, impressive St Matthew's Church is located in the exact centre of Guildford and within this village green. It is today one of Western Australia's best examples of Gothic Revival architecture. The park is also a traditional Aboriginal meeting place.



SWAN RIVER

Baker's Bridge



**SWAN VALLEY
VISITOR CENTRE**
OPEN 7 DAYS
9379 9400

MEADOW ST

To Swan Valley
Food and
Wine Trail

WAYLEN ST

TERRACE RD

Swan St
Shopping Precinct

START HERE

SWAN ST

STIRLING
SQUARE

Guildford
Heritage Precinct

BERTIE ST

HUGH ST

STIRLING ST

VICTORIA ST

Guildford Train Station

← To Perth City James Street Antique Strip

JAMES ST

JAMES ST

THE STIRLING SQUARE CIRCUIT

- S1.** Guildford Courthouse
- S2.** Colonial Gaol
- S3.** Taylor's Cottage
- S4.** Mechanics' Institute
- S5.** Gunners' Day

- S6.** Sugar Gums
- S7.** An Island Village
- S8.** Spiritually Rich
- S9.** Gateway to the Inland

- S10.** A Sought-after Address
- S11.** Barker & Gull's Warehouse

- S1** Trail Interpretive Panel
- The Stirling Square Circuit
450 metres, 20 min
- Perth - Midland Railway
- Train Station

- Public Toilets
- Barbecue Area
- Picnic Site
- War Memorial



HISTORIC



GUILDFORD

SWAN VALLEY HERITAGE CYCLING TRAIL



A great way to discover the history of the Swan Valley is to experience the Swan Valley Heritage Cycling trail.

Listed as one of Western Australia's Top Trails, the trail passes many interesting places including fresh produce stalls, picnic spots, galleries, wineries and restaurants. The trail is marked by a series of interpretive signs that illustrate the rich history, interesting characters and the natural environment of the region.

There are 4 distinct routes, all varying lengths, suitable for all ages and fitness levels and all using a combination of off road shared path or quiet back roads. There are three main entry points where visitors can leave their vehicles. A FREE map and guide to the trail can be collected from the Swan Valley Visitor Centre in Guildford or downloaded from www.swanvalley.com.au

© City of Swan January 2012 Disclaimer: Whilst every care has been taken in compiling the information in this publication, details may be subject to change without notice.

This project has been made possible through the support of:



SWAN VALLEY VISITOR CENTRE

Open 7 Days (closed Christmas Day) Guildford Courthouse c.1866 Cnr Meadow & Swan St, Guildford T: (08) 9379 9400 E: visitorcentre@swan.wa.gov.au W: www.swanvalley.com.au